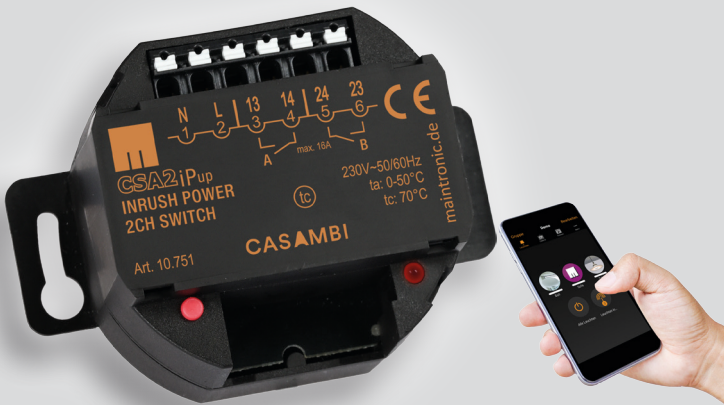


# Casambi Switch Actuator 2-fold 16A/165A

CSA2ip UP Item.No.: 10.751



maintronic



- 2x normally open contacts
- 16 A 230V AC
- Inrush current upto 165A/20ms
- Energy saving bistable relays
- Wireless controlled by Casambi
- Rich timer features
- Manual 2-CH switching functions \*

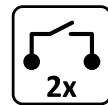
Two channel switch actuator with normally open contact for integration of any load into the Casambi wireless network. For loads with a high inrush currents under capacitive load shares (165A /20ms).



## High inrush current

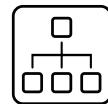
Current peaks up to 165A.

Automate your environment with Casambi ready sensors. With your tablet or smartphone controlling and configuration such as control time functions is very convenient and easy. Extended comfort functions such as long key, toggle, scenes and group functions.



## Potential free contacts

2 normally open inputs.



## Group devices

Create groups for joint control.



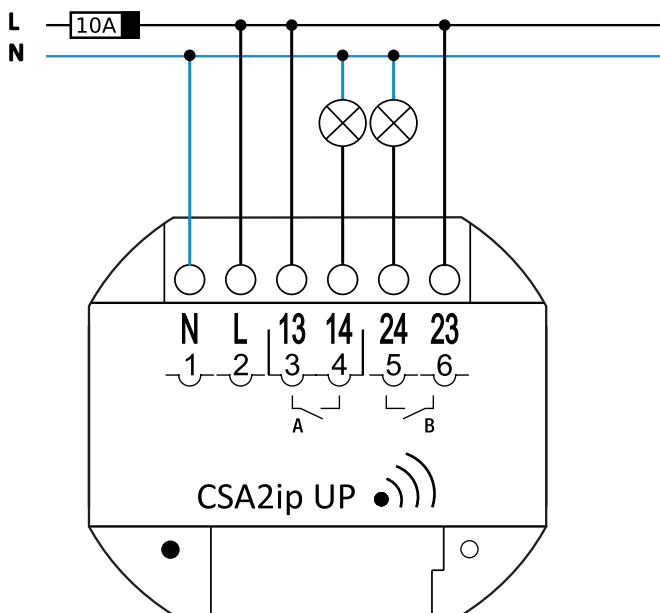
## Timer features

Run blinds with specific time.



## Casambi enabled wireless switches

Wireless Switch for fixed installations.



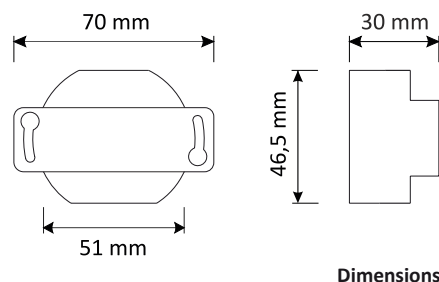
# Casambi Switch Actuator 2-fold 16A/165A

CSA2ip UP Item.No.: 10.751

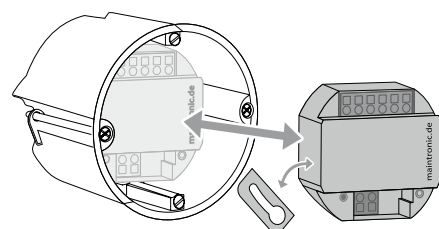


## Specifications

Power supply	The device must be operated with a single-phase only	130 ... 240V AC 50/60Hz
Switching type	Normally open inputs, potential free	2 x 16 A/ max 240V AC
Switching output	each channel 165A peak   16 A (10 sec)   5 A permanent	
Power consumption	Standby	0,22W
	Switch operation	0,70W
Terminals and wiring	Phoenix push-in spring connection	fine/ single-wire: 0,5 ... 1,5 mm <sup>2</sup> (AWG20 ... AWG16) fine-wire with ferrule: 0,5 ... 0,75 mm <sup>2</sup>
	Stripping length	9 mm (+/- 0,5 mm)
Controls and indicators	DeviceButton, Status-LED	
Environment	Type of protection	IP20
	Protection class	Class II
	Temperature ambient ta	0°...+50° Celsius
	Temperature critical tc	+70° Celsius
	Humidity	5 ... 80% non-condensing (n.c.)
	Protocol	Casambi
Design	Construction	Flush mounted housing
	Mounting	Flush-mounted or junction box
	Dimensions (height x width x depth) mm	46,5 x 70(51) x 30 (flaps can be removed)
	Weight	60g
	Ceiling installation	Ø 55mm
Customs	HS-Code/ TARIC-Number	85365080



Dimensions



Removeable flaps



Easy commissioning and control by Casambi App

### Please note for automation (\*):

At the moment there are restrictions for multi-channel devices in the Casambi firmware. The switching state of both switching paths (A/B) cannot be stored independently in a scene. If independent switching paths are necessary in the project, two modules should be used.